



November 18, 2014

News Release

Release #32

Monument Announces Second Round of RC Assay Results at Murchison Gold Project

Best Intercepts of 3m @ 6.09g/t Au from surface in infill drilling, and 5m @ 3.48g/t from exploration drilling

Vancouver, B.C. Monument Mining Limited (TSX-V: MMY and FSE: D7Q1) ("Monument" or the "Company") is pleased to announce the second round of drilling results from the resource drilling programme at the Murchison Gold Project in Western Australia, through its wholly owned Australia subsidiary Monument Murchison Pty Ltd. The Murchison Gold Project is 100% owned by Monument Mining Limited and consists of the historical Burnakura and Gabanintha projects. Figure 1 (Appendix 1) shows a Location Plan for the Project.

President and CEO Robert Baldock said: "Monument is a fast growing gold producing Company and has added the Murchison Gold Project in February 2014 into its gold property pipeline. Since acquisition it has drilled 13,400 metres in confirmation, infill and step out drilling. It has also progressively carried out a suite of technical studies targeting completion in June 2015, including metallurgical test work, mining engineering, process plant modifications and environmental studies aimed at putting the Project into production once economic viability has been demonstrated."

Highlights of the Drill Results

To date, a total of 102 RC holes have been completed in the first drilling programme at Alliance and New Alliance. A total of 64 RC holes have been previously reported, with assay results for the remaining 38 holes now available. Table 1 in Appendix 2 shows a breakdown of fire assay results completed by SGS Australia for intervals of mineralisation greater than 0.5g/t Au. Figure 2 shows the distribution of drill holes containing mineralised assay results greater than 0.5g/t Au (Appendix 3).

The majority of drilling to date has been angled from 60° - 75° inclination towards grid west, or as vertical holes. This drilling has confirmed the Alliance/New Alliance mineralisation is hosted within several north to northeast trending, moderately east dipping (~30°) narrow quartz veined zones with an average true thickness varying from 2 metres to 5 metres. * Drillhole orientation was designed to target perpendicular to mineralisation for true thickness, except where vertical holes were drilled – See Table 1. True thickness of mineralisation will be calculated once a resource model is compiled. The drillhole intercepts reported in this statement represent the actual sample intervals obtained from drilling.

According to Lisa Wells, Exploration Manager, these results further confirm favourable mineralization targets at Alliance and New Alliance from this new round of results. A total of 34 out of the 38 RC drillholes returned favourable mineralization greater than 0.5g/t Au. Of particular note, extensional drilling from this round produced an intercept of 2m @ 5.3g/t Au from 57 to 59m from hole 14MRC072, while exploration drilling produced an intersection of 5m @ 3.48g/t Au from 70 to 75m in hole 14MRC096. A proposed twinned hole shifted and re-angled, intersected 1m @ 17.7g/t Au from 42 to 43m where the historical hole produced 7.94g/t Au from the same interval. All of these results are very encouraging, especially the results from the extensional and exploration drilling.

Results from the diamond drilling programme of 6 PQ holes drilled at Alliance and New Alliance are now available and detailed in Table 3. At Alliance the best result was confirmed in hole 14MDD004 with 2m @ 14.08g/t Au from 36 to 38m. At New Alliance, 14MDD001 intersected 7.58g/t Au from 52 to 53m and 10.6g/t Au from 63 to 64m. This core material is currently being used for metallurgical testwork however these results will contribute to the resource information. Table 2 in Appendix 3 shows a breakdown of fire assay results greater than 0.5g/t Au. Appendix 4 shows the location information for all 102 drillholes from the first RC programme at Alliance/New Alliance.

A programme of RC drilling has recently been completed at Federal City. A total of 63 RC holes for 4,058m was completed on the 31st of October and samples sent to SGS laboratories. Results for this round of drilling will be reported once results have been received.

Background And Progress On The Exploration Program

The drilling programme was initiated in May 2014 at the Alliance and New Alliance open pit deposits at the Burnakura Project. Figure 3 shows the geological map for the Burnakura Tenement area (Appendix 5). The drilling program has been designed to validate the historical resource, increase the grade and geological continuity of the mineralisation through infill drilling and to test for resource extensions and define further exploration targets. This work will contribute to the current suite of technical studies for the project, which has been designed to provide the basis for a commercial outcome within an eighteen month time frame from acquisition. This news release should be read in conjunction with previous news releases dating from May 26, 2014.

Various technical studies are currently in progress at the Alliance and New Alliance prospects which include:

Resource confirmation and study

To date the historical estimates have been under review by independent consultants Cube Consulting (“Cube”). The complete historical resource drilling digital database has now been checked and validated by Cube for consistency. The data is now being held in a secure SQL database server. Cube has also reviewed the QAQC procedures and quality control data for the first 32 RC holes and considers at this stage that the veracity of the data is appropriate for the purposes of mineral resource estimation. The QAQC analysis for the remainder of the holes is in progress.

All data from the first programme of 102 holes at Alliance and New Alliance has now been input into the database and has been prepared for the upcoming initial mineral resource estimation. Cube will shortly commence studies on the geological model of Alliance and New Alliance and once this is completed they will commence work on the mineral resource estimation. The geological model will complement the estimation model and be used for potential mine planning purposes.

Fugro Geospatial has recently completed an aerial survey over the Burnakura and Gabanintha mining leases. The data from this work, which includes aerial photography and detailed contours, has now been received and will assist with resource and mine planning studies.

Metallurgical test work

Metallurgical testwork on PQ core samples from 6 holes at Alliance and New Alliance is currently underway. The work is testing the material for use with the existing CIL/CIP plant as well as potential for heap leach recovery. Complete results for this are pending and due in the first quarter of 2015.

A site inspection has recently been carried out by Kappes Cassiday Australia to assess the potential heap leach site and previous proposal for establishing a heap leach facility. In addition, Como Engineers conducted a field inspection to inspect the existing 1Mt facility heap leach equipment stored at site, purchased by the previous owners of Burnakura from the Indee Plant. The aim of the work is to see what would be entailed to reconstruct the equipment and increase it to the proposed 2Mt capacity, formerly postulated by the previous holders of the project.

A plant recommissioning inspection by Orway Mineral Consultants will commence in November with both process and electrical engineers to inspect and test the plant for safety purposes and readiness for recommissioning while the plant remains under Care and Maintenance.

Environmental study

Environmental permitting by Independent Consultants, Animal Plant Mineral, has been ongoing with further Programme of Works applications recently submitted for additional drilling activities.

APM has also recently carried out a flora/fauna spring survey at Alliance, New Alliance and Federal City in anticipation of its necessity should amendments to the current approved permits for mining be required. This work has also formed part of the Programme of Work applications for further drilling programmes at Alliance, New Alliance and Federal City.

Site maintenance and development

Since the acquisition of the asset, Monument has ensured that the plant and fixed assets are being kept in good care and maintenance order with a view to future commissioning. Site operations are fully functional for the needs of exploration with supply chain logistics firmly in place. All safety policies and procedures have been implemented at the Monument site operations, as required by the Department of Mines and Petroleum.

With the recent completion of drilling at Federal City, and in light of positive assay results received from the Alliance/New Alliance first programme of drilling, a further programme up to 5000m has been planned at Alliance/New Alliance to further test the extensional and exploration targets from the previous campaign, as well as additional exploration targets generated from recent geological investigations. The work is also aimed at providing any necessary infill drilling required for confirmation of the resource.

Exploration programmes targeting further mineralisation potential are currently in the planning stages given the promising results obtained from exploration drilling in this first programme, as well as target generation at the other projects.

The scientific and technical information in this press release has been compiled and reviewed by Darryl Mapleson (BSc (Hons), FAusIMM) who is a Competent Person as defined by JORC guidelines and a Qualified Person for NI43-101 retained by Monument Mining Limited. He has been working in Australia for Monument as an independent consultant.

The above stated development outlook is to the effect that a preliminary economic assessment has not been completed and there is no certainty the proposed operation will be economically viable.

About Monument

Monument Mining Limited (TSX-V:MMY, FSE:D7Q1) is an established Canadian gold producer that owns and operates the Selinsing Gold Mine in Malaysia. Its experienced management team is committed to growth and is advancing several exploration and development projects including the Mengapur Polymetallic Project, in Pahang State of Malaysia, and the Murchison Gold Projects comprising Burnakura, Gabanintha and Tuckanarra in the Murchison area of Western Australia. The Company employs over 300 people in both regions and is committed to the highest standards of environmental management, social responsibility, and health and safety for its employees and neighboring communities.

Robert F. Baldock, President and CEO
Monument Mining Limited
Suite 1580 -1100 Melville Street
Vancouver, BC V6E 4A6

FOR FURTHER INFORMATION visit the company web site at www.monumentmining.com or contact:

Richard Cushing, MMY Vancouver T: +1-604-638-1661 x102 rcushing@monumentmining.com
Wolfgang Seybold, Axino GmbH T: +49 711-2535-92 40 wolfgang.seybold@axino.com

"Neither TSX Venture Exchange nor its Regulation Services Provider (as that term is defined in the policies of the TSX Venture Exchange) accepts responsibility for the adequacy or accuracy of this release."

Forward-Looking Statement

This news release includes statements containing forward-looking information about Monument, its business and future plans ("forward-looking statements"). Forward-looking statements are statements that involve expectations, plans, objectives or future events that are not historical facts and include the Company's plans with respect to its mineral projects and the timing and results of proposed programs and events referred to in this news release. Generally, forward-looking information can be identified by the use of forward-looking terminology such as "plans", "expects" or "does not expect", "is expected", "budget", "scheduled", "estimates", "forecasts", "intends", "anticipates" or "does not anticipate", or "believes", or variations of such words and phrases or state that certain actions, events or results "may", "could", "would", "might" or "will be taken", "occur" or "be achieved". The forward-looking statements in this news release are subject to various risks, uncertainties and other factors that could cause actual results or achievements to differ materially from those expressed or implied by the forward-looking statements. These risks and certain other factors include, without limitation: risks related to general business, economic, competitive, geopolitical and social uncertainties; uncertainties regarding the results of current exploration activities; uncertainties in the progress and timing of development activities; foreign operations risks; other risks inherent in the

mining industry and other risks described in the management discussion and analysis of the Company and the technical reports on the Company's projects, all of which are available under the profile of the Company on SEDAR at www.sedar.com. Material factors and assumptions used to develop forward-looking statements in this news release include: expectations regarding the estimated cash cost per ounce of gold production and the estimated cash flows which may be generated from the operations, general economic factors and other factors that may be beyond the control of Monument; assumptions and expectations regarding the results of exploration on the Company's projects; assumptions regarding the future price of gold of other minerals; the timing and amount of estimated future production; the expected timing and results of development and exploration activities; costs of future activities; capital and operating expenditures; success of exploration activities; mining or processing issues; exchange rates; and all of the factors and assumptions described in the management discussion and analysis of the Company and the technical reports on the Company's projects, all of which are available under the profile of the Company on SEDAR at www.sedar.com. Although the Company has attempted to identify important factors that could cause actual results to differ materially from those contained in forward-looking statements, there may be other factors that cause results not to be as anticipated, estimated or intended. There can be no assurance that such statements will prove to be accurate, as actual results and future events could differ materially from those anticipated in such statements. Accordingly, readers should not place undue reliance on forward-looking statements. The Company does not undertake to update any forward-looking statements, except in accordance with applicable securities laws.

APPENDIX 1

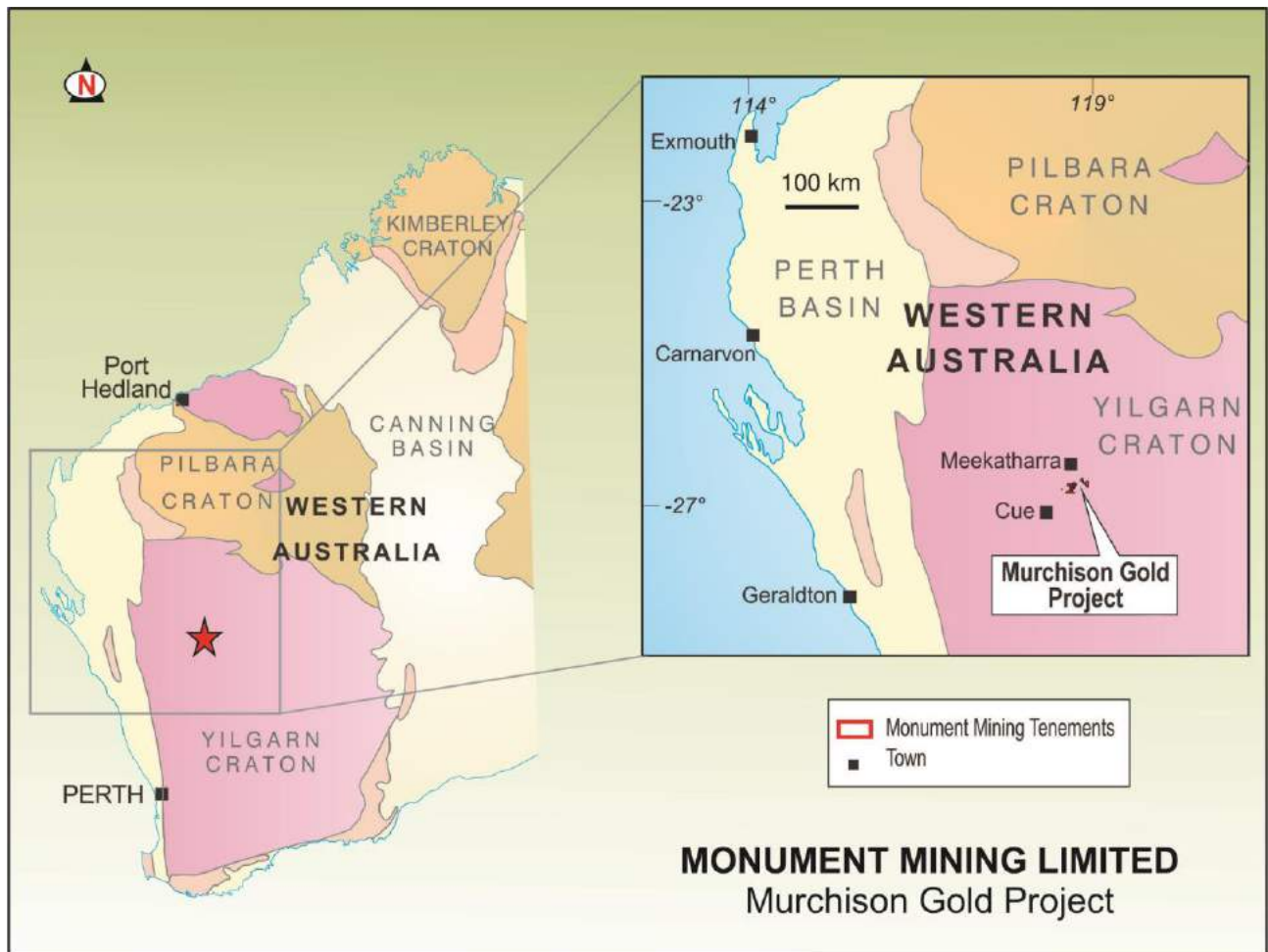


Figure 1 – Murchison Gold Project

APPENDIX 2

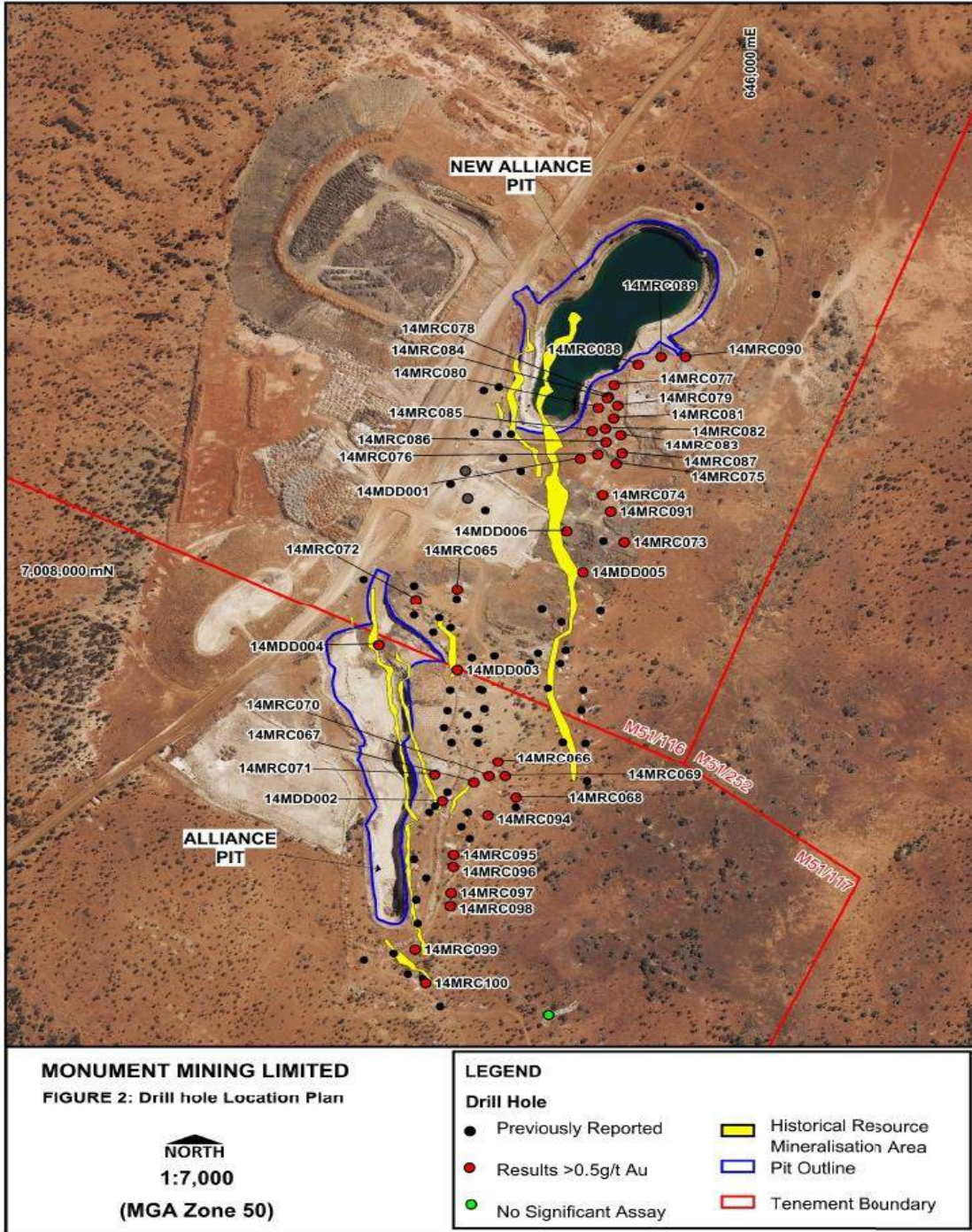
Table 1 - RC Drilling Fire assay results for intervals of mineralisation greater than 0.5g/t Au

MONUMENT MINING LIMITED												
Table 1: Significant Drill Intercepts > 0.5g/t												
ALLIANCE (Grid: GDA94)												
Hole Name	Hole Type	Purpose	Northing	Easting	RL	Dip	Azimuth	EO H	From	To	Length	Au (ppm)
14MRC065	RC	Exploration	7007970	645601	472	-59	267	103	84	86	2	1.16
14MRC066	RC	Infill	7007701	645657	472	-69	275	105	40	43	3	1.05
									53	56	3	0.99
									91	93	2	4.51
14MRC067	RC	Infill	7007669	645624	473	-90	125	110	31	32	1	0.80
									37	38	1	1.65
									74	76	2	6.14
14MRC068	RC	Infill	7007646	645681	471	-60	272	126	84	85	1	0.57
									91	93	2	4.66
14MRC069	RC	Infill	7007679	645666	471	-74	272	115	53	54	1	1.46
									89	92	3	3.59
14MRC070	RC	Infill	7007679	645645	472	-60	275	105	46	47	1	1.50
									78	80	2	1.59
									97	98	1	0.53
14MRC071	RC	Twin	7007681	645570	476	-60	273	75	42	43	1	17.70
									61	62	1	2.43
14MRC072	RC	Extensional	7007953	645545	472	-65	267	85	57	59	2	5.30
									77	78	1	2.34
14MRC094	RC	Exploration	7007618	645643	472	-64	270	105	96	97	1	2.33
14MRC095	RC	Exploration	7007558	645596	473	-64	272	87	39	40	1	0.75
									72	73	1	1.84
14MRC096	RC	Exploration	7007540	645596	473	-63	272	84	39	40	1	1.96
									70	75	5	3.48
14MRC097	RC	Exploration	7007500	645593	474	-64	271	93	54	55	1	0.96
									68	70	2	0.60
14MRC098	RC	Exploration	7007479	645591	474	-64	272	84	31	32	1	0.82
14MRC099	RC	Exploration	7007411	645543	476	-75	272	75	33	34	1	3.01
14MRC100	RC	Extensional	7007360	645558	476	-79	270	66	39	40	1	0.55
NEW ALLIANCE (Grid: GDA94)												
14MRC073	RC	Extensional	7008042	645829	467	-60	272	100	0	1	1	4.43
									78	82	4	1.85
14MRC074	RC	Infill	7008114	645800	467	-60	277	98	59	60	1	0.55
									64	66	2	0.57
									70	73	3	6.09
14MRC075	RC	Infill	7008162	645818	466	-59	318	100	80	84	4	1.83
									88	91	3	3.47
14MRC076	RC	Infill	7008176	645793	466	-60	317	99	63	65	2	0.98
									75	77	2	0.93
14MRC077	RC	Extensional	7008285	645815	466	-59	316	117	67	68	1	5.53
									71	72	1	4.70
									76	80	4	0.95
									107	108	1	1.48
14MRC078	RC	Extensional	7008266	645807	466	-59	316	105	67	68	1	1.12
									74	75	1	2.39
14MRC079	RC	Extensional	7008253	645820	466	-59	319	117	76	81	5	0.86

Hole Name	Hole Type	Purpose	Northing	Easting	RL	Dip	Azimuth	EO H	From	To	Length	Au (ppm)
14MRC080	RC	Extensional	7008250	645793	466	-60	316	93	51	53	2	1.12
									56	57	1	0.95
									67	68	1	0.54
14MRC081	RC	Extensional	7008233	645815	466	-59	316	96	70	72	2	5.04
									75	82	7	0.62
14MRC082	RC	Infill	7008217	645803	466	-59	315	98	61	65	4	0.78
									78	79	1	0.71
14MRC083	RC	Infill	7008207	645824	466	-59	320	102	32	33	1	1.80
									78	80	2	5.68
14MRC084	RC	Extensional	7008265	645806	466	-59	315	70	66	67	1	1.72
14MRC085	RC	Infill	7008214	645785	467	-60	315	84	0	1	1	19.70
									49	54	5	1.25
									59	60	1	0.94
									65	69	4	1.25
14MRC086	RC	Infill	7008197	645804	466	-59	318	102	69	71	2	1.55
									78	82	4	0.67
14MRC087	RC	Infill	7008177	645826	466	-59	316	108	83	87	4	1.59
									92	96	4	1.66
14MRC088	RC	Extensional	7008316	645848	465	-60	316	107	81	82	1	0.73
									87	89	2	0.54
									98	99	1	0.67
14MRC089	RC	Extensional	7008328	645879	465	-59	316	111	98	99	1	0.58
									104	10	5	1.40
14MRC090	RC	Extensional	7008328	645913	465	-60	316	113	57	58	1	0.75
									97	99	2	2.30
14MRC091	RC	Extensional	7008089	645810	467	-59	270	100	72	73	1	1.30
									76	80	4	1.15
Selection Parameters												
Top Cut		99999999										
Bottom Cut		0.5										
Maximum Internal Dilution		2										
Minimum Interval Length		1										
Individual Reportable Assays		1										
LEGEND												
	0.5-1.0g/t											
	1.0-2.0g/t											
	2.0-5.0g/t											
	5.0-10.0g/t											
	Significant Intercept											
PURPOSE												
Extensional	Testing Further Extensions of Mineralisaion											
Exploration	Testing Previously Untested Areas not Related to Current Mineralisation											
Infill	Drilling Between Previously Drilled Historic Holes											
Metallurgical	Drilled for Metallurgical Testwork Samples and as Verification Holes											
Step Out	Drilling Outwards from Current Mineralised Drillhole											
Twin	Redrill of Pre-existing Drillhole to Confirm Results											

APPENDIX 3

Figure 2: Drillhole Location Plan for Assays Greater than 0.5g/t



APPENDIX 4

Diamond Drilling Fire assay results for intervals of mineralisation greater than 0.5g/t Au

ALLIANCE (Grid: GDA94)

Hole Name	Hole Type	Purpose	Northing	Easting	RL	Dip	Azimuth	EO H	From	To	Length	Au (ppm)
14MDD002	DDH	Metallurgical	7007640	645581	474	-81	282	56.3	22	23	1	1.22
									42.75	46	3.25	7.55
14MDD003	DDH	Metallurgical	7007843	645601	473	-80	275	80	76	77	1	3.99
14MDD004	DDH	Metallurgical	7007881	645494	466	-85	282	54.5	36	38	2	14.08

NEW ALLIANCE (Grid: GDA94)

Hole Name	Hole Type	Purpose	Northing	Easting	RL	Dip	Azimuth	EO H	From	To	Length	Au (ppm)
14MDD001	DDH	Metallurgical	7008170	645769	467	-81	281	84.3	52	53	1	7.58
									58	59	1	2.02
									63	64	1	10.60
									67	69	2	1.83
14MDD005	DDH	Metallurgical	7007996	645773	467	-82	278	59	39	41	2	0.72
									46	49	3	1.10
14MDD006	DDH	Metallurgical	7008059	645750	468	-85	272	68.5	38	41	3	0.65
									44	47	3	1.74
									47.5	51	3.5	6.10

APPENDIX 5

Collar Information for First Campaign of RC and Diamond Drilling at Alliance/New Alliance

Hole_ID	Northing	Easting	Start Date	End Date	Drilled Depth (m)
14MRC001	7008127	645594	23/05/14	24/05/14	125
14MRC002	7008090	645639	24/05/14	26/05/14	106
14MRC003	7007906	645592	26/05/14	26/05/14	95
14MRC004	7007922	645576	27/05/14	27/05/14	93
14MRC005	7007860	645620	27/05/14	28/05/14	112
14MRC006	7007808	645635	29/05/14	29/05/14	112
14MRC007	7007774	645615	29/05/14	30/05/14	110
14MRC008	7007750	645631	30/05/14	31/05/14	121
14MRC009	7007728	645631	31/05/14	1/06/14	113
14MRC010	7007860	645650	1/06/14	2/06/14	123
14MRC011	7007782	645638	3/06/14	4/06/14	116
14MRC012	7007621	645565	5/06/14	5/06/14	66
14MRC013	7007620	645618	4/06/14	4/06/14	90
14MRC014	7007600	645606	5/06/14	5/06/14	89
14MRC015	7007550	645544	6/06/14	6/06/14	79
14MRC016	7007519	645558	6/06/14	6/06/14	65
14MRC017	7007488	645545	7/06/14	7/06/14	85
14MRC018	7007452	645548	7/06/14	7/06/14	76
14MRC019	7007403	645515	8/06/14	8/06/14	55
14MRC020	7007373	645537	8/06/14	8/06/14	55
14MRC021	7007365	645555	8/06/14	8/06/14	62
14MRC022	7007322	645579	9/06/14	9/06/14	62
14MRC023	7007394	645475	9/06/14	9/06/14	56
14MRC024	7007627	645679	9/06/14	11/06/14	125
14MRC025	7007670	645779	12/06/14	12/06/14	62
14MRC026	7007701	645778	12/06/14	12/06/14	78
14MRC027	7007725	645776	13/06/14	13/06/14	85
14MRC028	7007731	645745	13/06/14	13/06/14	62
14MRC029	7007780	645771	14/06/14	14/06/14	82
14MRC030	7007814	645773	16/06/14	16/06/14	84
14MRC031	7007871	645751	16/06/14	18/06/14	79
14MRC032	7007911	645746	18/06/14	18/06/14	77
14MRC033	7007813	645727	18/06/14	19/06/14	82
14MRC034	7007853	645700	20/06/14	20/06/14	75
14MRC035	7007866	645711	20/06/14	20/06/14	79
14MRC036	7007933	645716	21/06/14	21/06/14	53
14MRC037	7007851	645742	21/06/14	21/06/14	73

Hole_ID	Northing	Easting	Start Date	End Date	Drilled Depth (m)
14MRC038	7008209	645624	21/06/14	22/06/14	101
14MRC039	7008167	645663	22/06/14	23/06/14	92
14MRC040	7008422	646089	25/06/14	25/06/14	123
14MRC041	7008487	646013	25/06/14	26/06/14	125
14MRC042	7008559	645931	26/06/14	27/06/14	116
14MRC043	7008618	645851	28/06/14	28/06/14	120
14MRC044	7007809	645591	29/06/14	30/06/14	100
14MRC045	7007778	645588	30/06/14	30/06/14	100
14MRC046	7007752	645584	2/07/14	3/07/14	100
14MRC047	7007731	645596	3/07/14	4/07/14	100
14MRC048	7007654	645588	4/07/14	4/07/14	100
14MRC049	7007630	645568	5/07/14	5/07/14	100
14MRC050	7007580	645617	5/07/14	6/07/14	100
14MRC051	7007933	645796	7/07/14	7/07/14	73
14MRC052	7008040	645801	7/07/14	7/07/14	93
14MRC053	7007814	645629	9/07/14	10/07/14	112
14MRC054	7007752	645624	10/07/14	11/07/14	121
14MRC055	7007975	645540	12/07/14	12/07/14	100
14MRC056	7007952	645601	13/07/14	13/07/14	104
14MRC057	7008276	645635	15/07/14	16/07/14	38
14MRC058	7008280	645658	14/06/14	15/07/14	43
14MRC059	7008207	645656	16/07/14	16/07/14	51
14MRC060	7008206	645676	16/07/14	16/07/14	56
14MRC061	7008149	645687	16/07/14	17/07/14	45
14MRC062	7007984	645475	17/07/14	17/07/14	85
14MRC063	7007927	645542	18/07/14	18/07/14	85
14MRC064	7007899	645568	18/07/14	19/07/14	80
14MRC065	7007971	645601	19/07/14	20/07/14	103
14MRC066	7007700	645654	20/07/14	21/07/14	105
14MRC067	7007670	645624	21/07/14	23/07/14	110
14MRC068	7007646	645683	23/07/14	24/07/14	126
14MRC069	7007680	645666	24/07/14	25/07/14	115
14MRC070	7007679	645644	25/07/14	26/07/14	105
14MRC071	7007684	645572	26/07/14	27/07/14	75
14MRC072	7007956	645546	27/07/14	27/07/14	85
14MRC073	7008042	645831	28/07/14	28/07/14	100
14MRC074	7008115	645801	29/07/14	30/07/14	98
14MRC075	7008160	645818	1/08/14	1/08/14	100

Hole_ID	Northing	Easting	Start Date	End Date	Drilled Depth (m)
14MRC076	7008178	645795	1/08/14	2/08/14	99
14MRC077	7008287	645815	2/08/14	3/08/14	117
14MRC078	7008267	645807	3/08/14	6/08/14	105
14MRC079	7008252	645819	6/08/14	7/08/14	117
14MRC080	7008253	645794	7/08/14	7/08/14	93
14MRC081	7008235	645814	7/08/14	8/08/14	96
14MRC082	7008218	645802	8/08/14	8/08/14	98
14MRC083	7008208	645825	9/08/14	9/08/14	102
14MRC084	7008265	645807	9/08/14	9/08/14	70
14MRC085	7008216	645786	10/08/14	10/08/14	84
14MRC086	7008196	645803	10/08/14	11/08/14	102
14MRC087	7008175	645829	11/08/14	13/08/14	108
14MRC088	7008316	645849	13/08/14	13/08/14	107
14MRC089	7008327	645882	14/08/14	14/08/14	111
14MRC090	7008329	645912	14/08/14	15/08/14	113
14MRC091	7008090	645811	15/08/14	16/08/14	100
14MRC092	7008150	645611	16/08/14	16/08/14	80
14MRC093	7008112	645618	16/08/14	3/09/14	80
14MRC094	7007618	645645	3/09/14	3/09/14	105
14MRC095	7007560	645595	3/09/14	4/09/14	87
14MRC096	7007540	645596	4/09/14	4/09/14	84
14MRC097	7007501	645593	5/09/14	5/09/14	93
14MRC098	7007482	645593	5/09/14	5/09/14	84
14MRC099	7007411	645541	6/09/14	6/09/14	75
14MRC100	7007359	645559	6/09/14	7/09/14	66
14MRC101	7007312	645725	6/09/14	7/09/14	108
14MRC102	7007248	645719	7/09/14	9/09/14	108
Total					9,339

Hole_ID	Northing	Easting	Start Date	End Date	Drilled Depth (m)
14MDD001	7008173	645770	29/05/14	3/06/14	85
14MDD002	7007639	645581	4/06/14	5/06/14	62.3
14MDD003	7007844	645602	6/06/14	8/06/14	80
14MDD004	7007885	645493	9/06/14	11/06/14	54.5
14MDD005	7008000	645773	12/06/14	13/06/14	59
14MDD006	7008060	645751	14/06/14	16/06/14	68.5
Total					409.3

