

Corporate Presentation
Executing Value Creation
March 2022

Forward Looking Statements

This presentation includes statements containing forward-looking statements or forward-looking information under applicable Canadian securities laws (hereinafter collectively referred to as “forward-looking statements”) about Monument, its business and future plans. Forward-looking statements are statements regarding possible events, conditions or financial performance that are based on assumptions about future economic conditions and courses of action and include expectations, plans, objectives or future events that are not historical facts. Statements concerning estimates of mineral resources and mineral reserves may also be deemed to constitute forward-looking statements to the extent that they involve estimates of the mineralization that will be encountered if a property is developed, and in the case of mineral reserves, such statements reflect the conclusion based on certain assumptions that the mineral deposit can be economically exploited. Any statements that express or involve discussions with respect to predictions, expectations, beliefs, plans, projections, objectives, assumptions or future events or performance (often, but not always, using forward-looking terminology such as “plans”, “expects” or “does not expect”, “is expected”, “budget”, “scheduled”, “estimates”, “forecasts”, “intends”, “anticipates” or “does not anticipate”, or “believes”, or variations of such words and phrases or state that certain actions, events or results “may”, “could”, “would”, “might” or “will be taken”, “occur” or “be achieved”) are not statements of historical fact and may be forward-looking statements. Forward-looking statements in this presentation include, without limitation, statements related to: the Company’s expectations regarding future gold production at the Selinsing Gold Mine; the ability of the Company to advance exploration and development properties into commercial production; the results of testing gold and copper recovery technologies; completion of technical reports on the Company’s projects and the timing and results thereof; timing, costs and potential success of future activities on the Company’s properties, including but not limited to development and operating costs in the event that a production decision is made; potential success of exploration, development and environmental protection and remediation activities; and all other plans for mining, development and exploration on the Company’s properties and the timing and results thereof. The forward-looking statements in this presentation are subject to various risks, uncertainties and other factors that could cause actual results or achievements to differ materially from those expressed or implied by the forward-looking statements. These risks and certain other factors include, without limitation: risks related to gold, base metal and other commodity price fluctuations; risks related to general business, economic, competitive, geopolitical and social uncertainties; uncertainties in testing gold and copper recovery technologies that have not been proven in the field; uncertainties inherent in economic studies and resource estimates; uncertainties regarding the results and timing of current exploration activities; uncertainties in the progress and timing of development activities and the possibility that future exploration, development or mining results will not be consistent with the Company’s expectations and/or the results of initial feasibility, prefeasibility and feasibility studies, including those related to the interpretation of drill results, and the geology, grade and continuity of mineral deposits; foreign operations risks, including risks related to changes in mining license rights, tax rates and government royalty requirements; risks related to the ability to obtain financing required to develop mining properties or to complete significant technical, environmental or engineering studies; risks related to foreign exchange fluctuations; risks related to environmental regulation and liability; risks associated with failure to maintain community acceptance, agreements and permissions (generally referred to as “social license”); risks related to the outcome of legal actions, including any ongoing legal litigation; other risks inherent in the mining industry, including political and regulatory risks, and other risks and uncertainties related to the Company’s prospects, properties and business strategy, including those described in the management discussion and analysis of the Company and the technical reports on the Company’s projects, which are available under the profile of the Company on SEDAR at www.sedar.com. Material factors and assumptions used to develop forward-looking statements in this presentation include: general economic factors and other factors that may be beyond the control of Monument will not change in a materially adverse manner; the results of exploration on the Company’s projects will be as expected; the future price of gold or other minerals will be sustained, or will improve; the expected timing and results of development and exploration activities of the Company will not differ material from management's expectations; costs of future activities will be as expected; capital and operating expenditures will be as expected; exploration, mining and processing activities will be viable operationally and economically and proceed as expected; political matters in Malaysia and other jurisdictions in which the Company does or may carry on business in the future will be stable, and that mining rights, tax rates, and government royalty regimes in those jurisdictions will not undergo significant change; and all of the factors and assumptions described in the management discussion and analysis of the Company and the technical reports on the Company’s projects, all of which are available under the profile of the Company on SEDAR at www.sedar.com. Although the Company has attempted to identify important factors that could cause actual results to differ materially from those contained in forward-looking statements, there may be other factors that cause results not to be as anticipated, estimated or intended. Should one or more of these risks and uncertainties materialize, or should underlying assumptions prove incorrect, actual results may vary materially from those described in forward-looking statements. There can be no assurance that such statements will prove to be accurate, as actual results and future events could differ materially from those anticipated in such statements. Accordingly, readers should not place undue reliance on forward-looking statements. The Company does not undertake to update any forward-looking statements, except in accordance with applicable securities laws.

Corporate Summary

Undervalued Gold Producer and Explorer

- **Producing Asset:** Malaysia – 328.2 koz produced since 2010, 1mtpa plant, 6-yr LOM extension underway
- **Exploration Portfolio:** Western Australia – existing resources, 260 ktpa gold plant on C&M
- **Resource Base (NI 43-101 compliant):** 880 koz¹ Selinsing, 381 koz² Murchison
- **Cash Balance**³: US\$27.8m vs **Market Cap:** C\$39.2m (March, 8 2022)



Listed on TSX Venture	Symbol: MMY
Listed on Frankfurt	Symbol: D7Q1
Market capitalization	C\$39.2 million
Issued shares	326.47 million
Management & Directors	66.38 million
RSUs	14.02 million
Fully diluted	340.5 million
52-week trading range	\$0.10 - \$0.21
Recent price (08.03.22)	\$0.12

¹Selinsing NI 43-101 Technical Report, Snowden, January 2019.

²Murchison NI 43-101 Technical Report, SRK, July 2018.

³All financial and operation figures in the presentation are based on consolidated financial statements as of December 31, 2021 (www/Sedar.com), otherwise as stated.

Board of Directors & Founder



Robert Baldock
FOUNDER



Graham Dickson
Chairman of the Board



Cathy Zhai
Director, President & CEO



Zaidi Harun
**Director, VP Business
Development**



Michael Kitney
Director



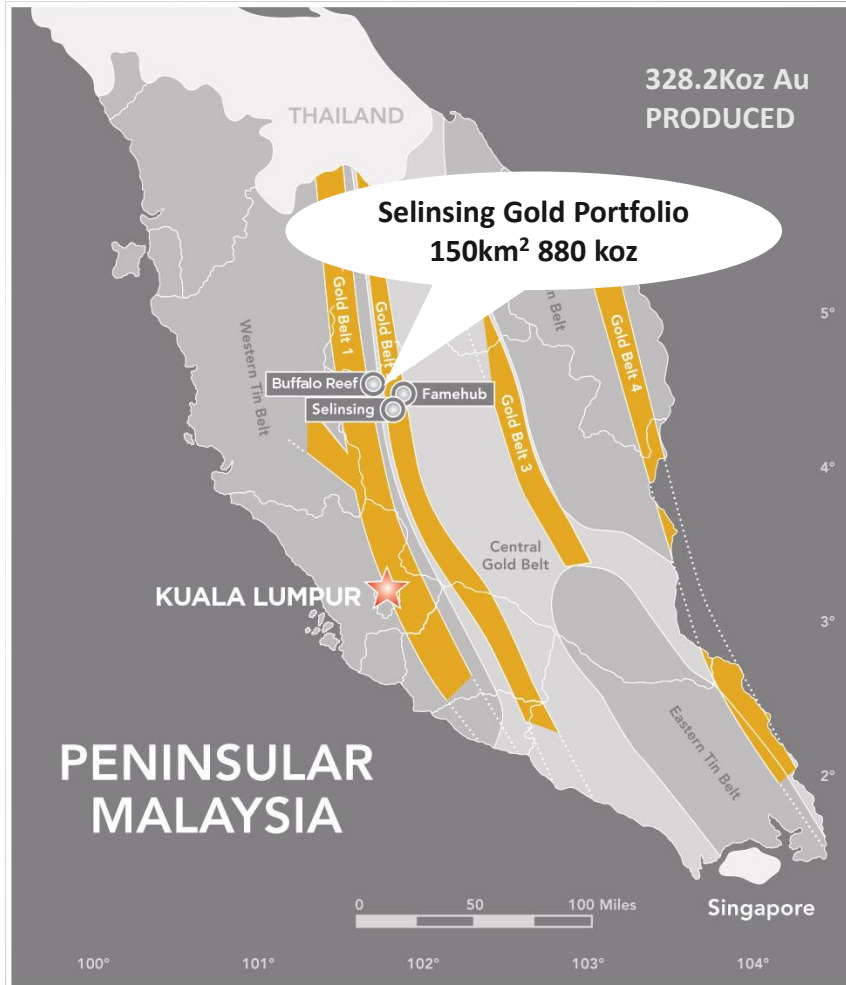
Dato' Sia Hok Kiang
Director



Jean-Edgar de Trentinian
Director

Core Operations

Producing Asset - Malaysia



Exploration/Development - Australia



Investment Highlights

Undervalued Gold Producer and Explorer

PROVEN GOLD PRODUCER

Selinsing Gold Mine (Malaysia)

- 11 years in production; 328,235 oz of gold produced as of December 31, 2021
- Mineral Resources of 880 koz, including Mineral Reserves of 267 koz Au at 1.45 g/t

HIGH QUALITY EXPLORATION PORTFOLIO

Murchison Gold Portfolio (Western Australia)

- NI 43-101 Compliant Mineral Resources of 381 koz Au, with 293 koz Indicated & 88 koz Inferred
- Well maintained plant and infrastructure ready for production restart
- Exploration potential from extensions to known mineralization and new untested targets

STRONG LONG TERM CASHFLOWS

Selinsing Gold Mine (Malaysia)

- Historical cash cost of US \$551/oz and net cash from production of US\$242m (as of December 31, 2021)
- Feasibility study for LOM extension Sulphide Project shows cash cost of US\$863/oz and net cash from operations of US\$99 million over 6 years¹

WELL FUNDED

Strong Cash Position, No Debt

- Cash position US\$27.8m as of December 31, 2021

¹Selinsing NI 43-101 Technical Report, Snowden, January 2019.

Implementing Long-Term Growth Strategy

Value Creation Through Expansion, Exploration and Acquisitions

Targeted Acquisition

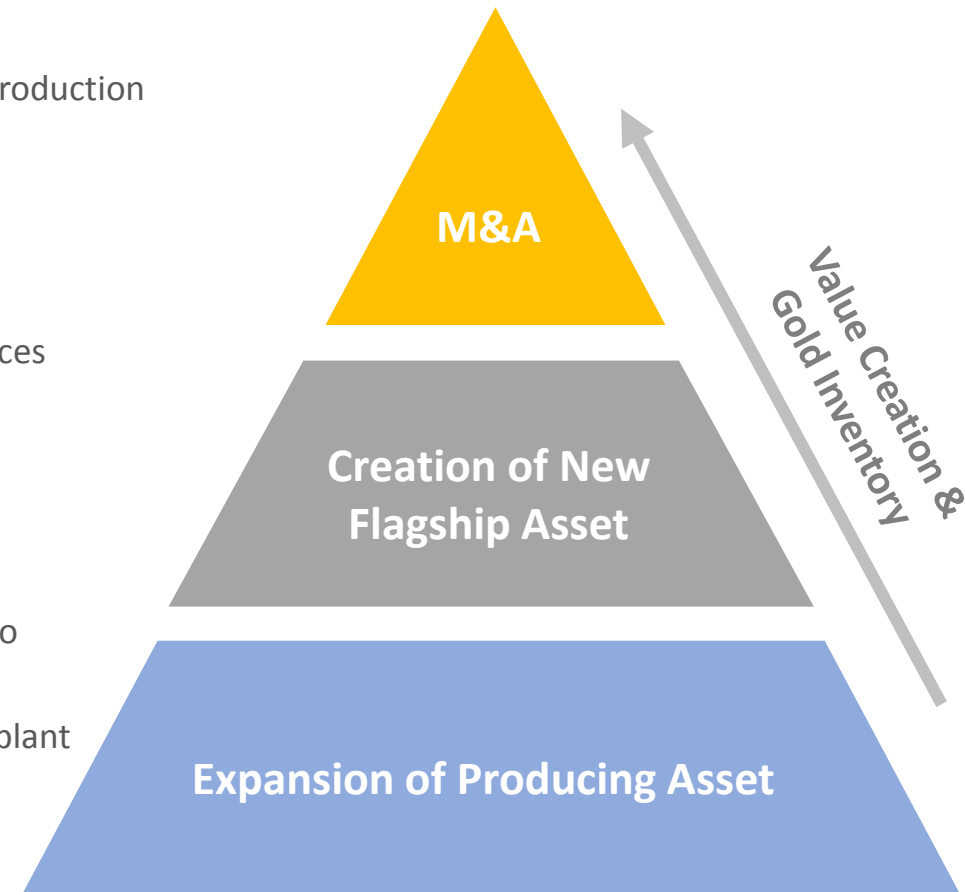
- Proceed with a disciplined acquisition to increase the Company's gold production profile

Establish Murchison As Cornerstone Asset

- Aggressive two-year exploration program to delineate additional resources
- Opportunity for early cash flow from restart of 260 ktpa gold plant

Upgrade Selinsing for Sustaining Production

- Stage 1- Construction of Flotation Plant to treat sulphide ore materials to produce marketable gold concentrate
- Opportunity for tolling of third-party concentrate through stage 2 BIOX plant
- Near-mine and district exploration potential

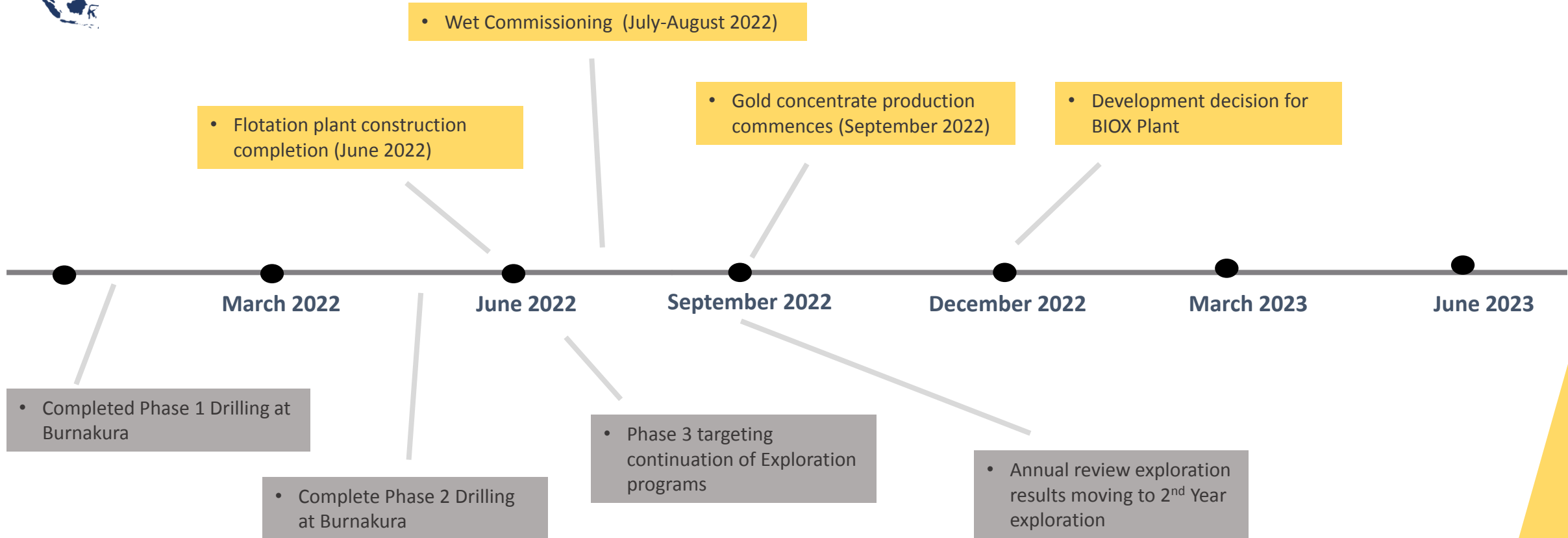


Implementation Timeline & Milestones

Strong News Flow Ahead



Malaysia



Western Australia

Corporate Social Responsibility

Monument takes CSR very seriously and has organised and funded a number of programs within its local communities over the years.

Top Left: Financial support for disability programs at the Selinsing Gold Mine



Top Right: Sponsorship of a student excellence program at Sungai Koyan near the Selinsing Gold Mine



Bottom Left: Support for early education programs in Kuala Lipis



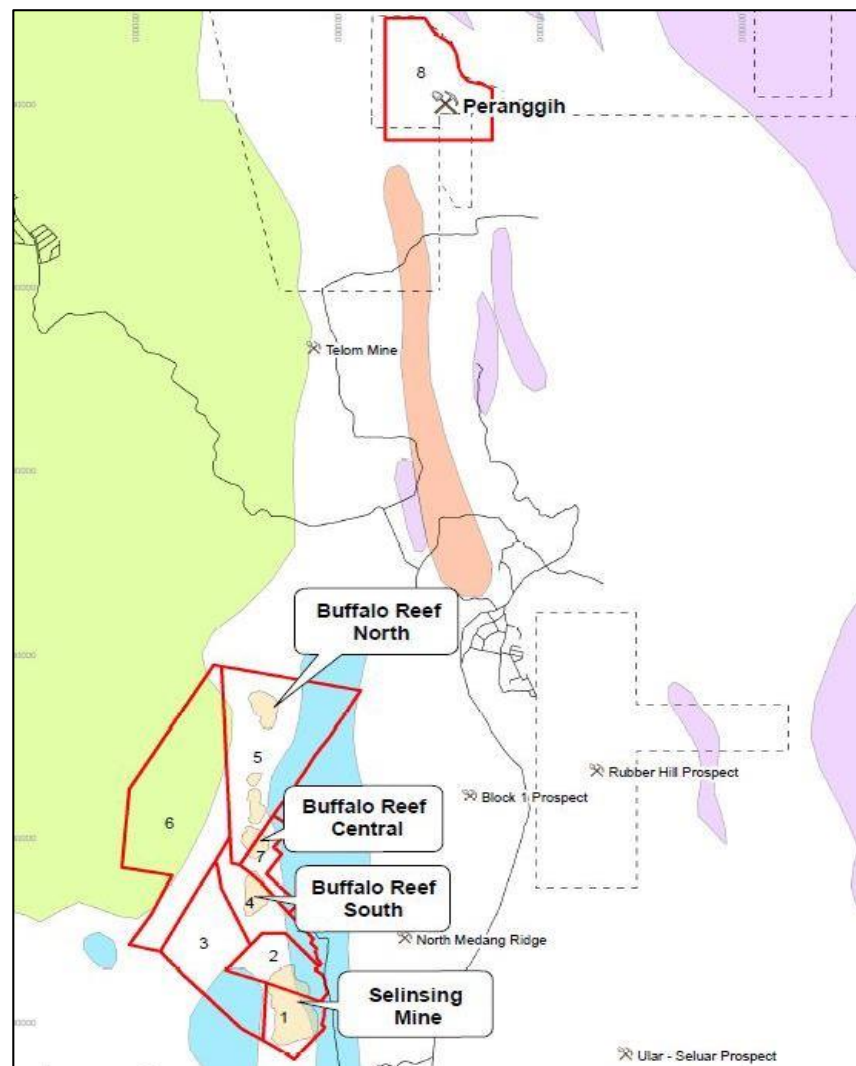
Bottom Right: Covid-19 education for primary school students at Sungai Koyan Town, near the Selinsing Gold Mine





**SELINSING
GOLD MINE
MALAYSIA**

Selinsing Gold Portfolio



Monument's Selinsing Gold Portfolio is in the Central Gold Belt of Western Malaysia

- 158km north of Kuala Lumpur
- Total tenement area of 150km²
- Consists of the Selinsing, Buffalo Reef, Felda Land, Peranggih and Famehub properties
- 1 million tonne per annum (TPA) gold processing CIL plant
- Started commercial production in October 2010
- Underway for implementation of the Sulphide Gold Project to bring the new life of mine into production
- Targeting to deliver flotation production of gold concentrates by September 2022

Selinsing Gold Mine

Low-Cost Producer with Growth Potential

Historic Production Figures



Start of Production
2010



Cash Costs
US\$551 Per Ounce



Mill Capacity
1 Million Tpa



Gold Produced
328.2 koz



Revenue Generated
US\$459.5m



IRR
49%



Upfront Capex
US\$53M



LoM Production
223 koz



Cash Costs
US\$863/oz



6 Year LOM
Extension



Simple Payback
2.5 Yrs

Selinsing Sulphide Expansion Feasibility Study



Selinsing Gold Mine, Malaysia

Selinsing-Flotation Plant Construction



Transition to Sulphide Gold Treatment currently underway with flotation plant construction and mine development currently underway

- Estimated construction costs of up to \$20 million
- Construction includes project management, project validation, flotation design, and engineering, procurement, construction and commissioning
- Mine Development work includes upgrading tailing storage facilities, pit push backs, and river diversion



Selinsing – Processing Plant Expansion

Phased Expansion Strategy with Phase 1 Initial Capital of US\$20 Million



Initial Flotation
Concentrates

CONCENTRATE FLOTATION PLANT

- Low capex first stage production
- Targeting wet commissioning in July 2022
- Production of gold concentrate for sale to smelters / trading companies



BIOX[®] Add-In Options

BIOX PLANT & THIRD-PARTY CONCENTRATE PROCESSING

- Opportunity to establish niche market to underpin sustainable long term cash flows
- BIOX plant development funded from concentrate sales
- Expected 12-month construction timeframe
- Potential mill expansion to create greater scale of production



Convertible Feature

PLANT CAN BE CONVERTED FOR OXIDE PRODUCTION

Selinsing Resources and Reserves

TABLE 1: SELINSING-BUFFALO REEF/FELDA MINERAL RESERVES AS OF MARCH 31, 2018 (SNOWDEN)

Category	OXIDE (above approx. 0.4 g/t Au cut-off)			TRANSITION (above approx. 0.75 g/t Au cut-off)			SULPHIDE (above approx. 0.75 g/t Au cut-off)			OXIDE + TRANSITION + SULPHIDE		
	KTonnes	g/t	Au (kOz)	KTonnes	g/t	Au (kOz)	KTonnes	g/t	Au (kOz)	KTonnes	g/t	Au (kOz)
MINERAL RESERVES (BASED ON A US\$1,300/OZ GOLD PRICE)												
Proven*	1,265	0.47	19	-	-	-	45	1.53	2	1,310	0.51	21
Probable**	991	0.91	29	757	1.72	41.9	2,680	2.03	175.1	4,428	1.73	246
P+P	2,256	0.67	48	757	1.72	42	2,725	2.02	177	5,738	1.45	267

TABLE 2: SELINSING-BUFFALO REEF/FELDA MINERAL RESOURCES AS OF MARCH 31, 2018 (SNOWDEN)

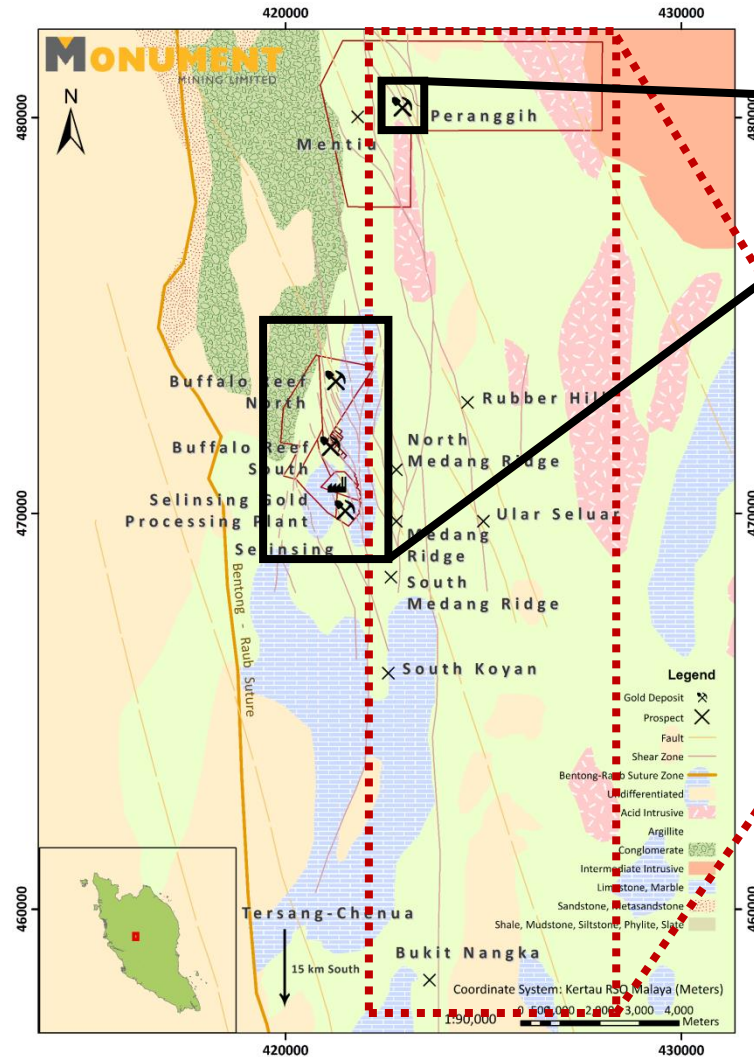
Category	OXIDE (above 0.3 g/t Au cut-off)			TRANSITION (above 0.5 g/t Au cut-off)			SULPHIDE (above 0.5 g/t Au cut-off)			OXIDE + TRANSITION + SULPHIDE		
	KTonnes	g/t	Au (kOz)	KTonnes	g/t	Au (kOz)	KTonnes	g/t	Au (kOz)	KTonnes	g/t	Au (kOz)
MINERAL RESOURCES, REPORTED INCLUSIVE OF MINERAL RESERVES (BASED ON A POTENTIAL US\$2,400/OZ GOLD PRICE)												
Measured*	1,265	0.47	19	-	-	-	45	1.53	2	1,310	0.51	21
Indicated**	1,533	0.85	42	1,086	1.49	52	8,052	1.60	415	10,671	1.48	509
M+I	2,798	0.68	61	1,086	1.49	52	8,097	1.60	417	11,981	1.38	530
In-ferred***	349	1.05	11.8	485	1.22	19	5,563	1.79	319	6,397	1.70	350

*Proven Reserve is entirely stockpile material
 **Probable Oxide Reserve is a combination of in situ oxide material occurring in Selinsing and Buffalo Reef/Felda deposits plus Selinsing Old Tailings material; Probable Transition and Sulphide Reserve comprises in situ material occurring in Selinsing and Buffalo Reef/Felda deposits

*Measured Resource is entirely stockpile material
 **Indicated Oxide Resource is a combination of in situ oxide material occurring in Selinsing and Buffalo Reef/Felda deposits plus Selinsing Old Tailings material; Indicated Transition and Sulphide Resource comprises in situ material occurring in Selinsing and Buffalo Reef/Felda deposits
 ***Inferred Resource comprises in situ material occurring in Selinsing and Buffalo Reef/Felda deposits

Selinsing – Resource Replacement Strategy

Significant Exploration Potential for Long Term Resource Growth



Near-Mine Potential

- Existing sulphide resources at Selinsing / Buffalo Reef open at depth
- Additional near-surface oxide material around Peranggh open pits

Regional Exploration Potential

- Numerous regional targets with known gold mineralization
- Recent discoveries include a 1.8km x 0.8km gold soil anomaly near Peranggh
- Other known prospects within trucking distance of Selinsing plant
- Targets hosted in the same shear zone and lithology as Selinsing



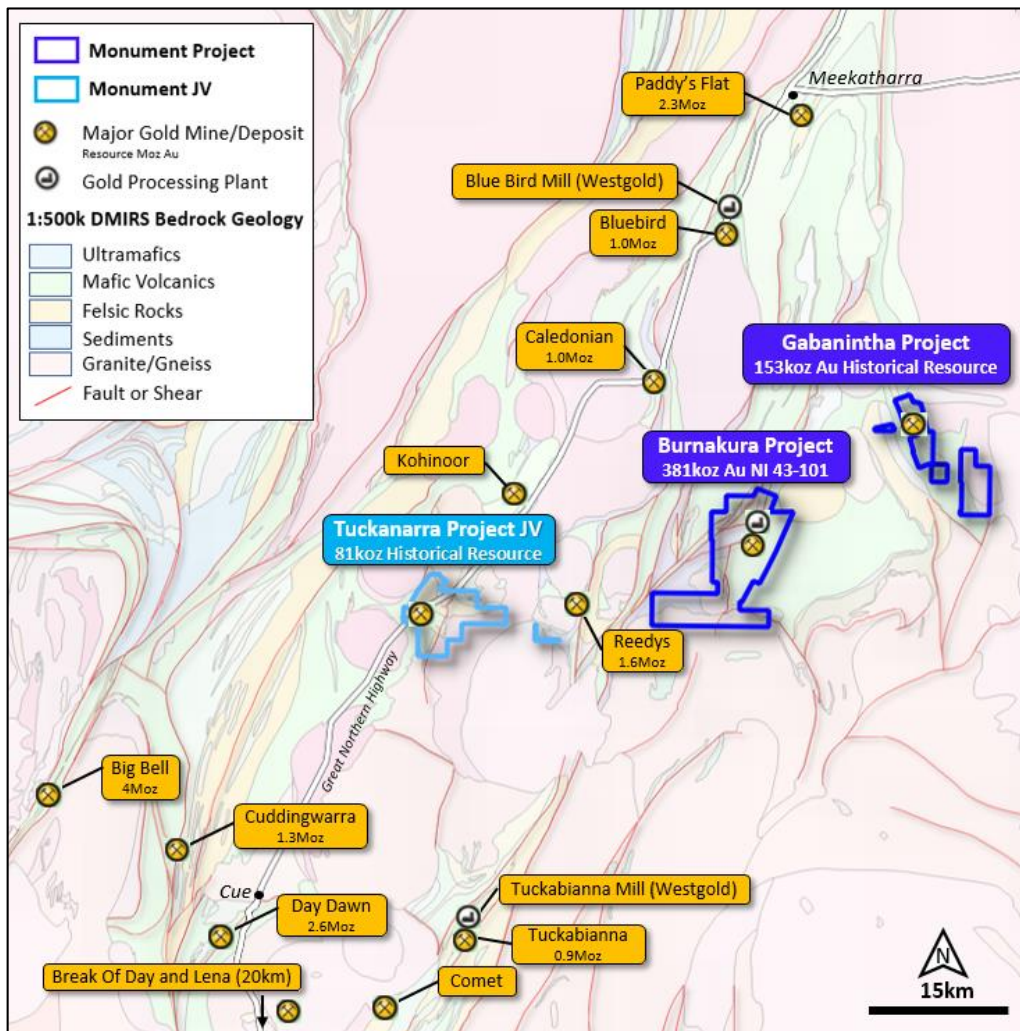
MURCHISON PORTFOLIO

WESTERN AUSTRALIA



Murchison Portfolio

Developing A Potential Cornerstone Asset



¹Fraser Institute Annual Survey of Mining Companies 2020

Monument has a highly prospective gold portfolio in WA

- Burnakura, Gabanintha and 20% Tuckanarra free carried JV interest, historic resources of 644koz with 381koz confirmed, multiple historical producing pits 500koz delivered
- Well maintained plant with a full camp ready for production

Portfolio Highlights

- **Jurisdiction:** Western Australia is World's #4 mining jurisdiction¹
- **Location:** Murchison Gold Field has yielded over 15 moz; Monument tenements near 1 moz+ mines
- **Competition:** Multiple companies actively mining & exploring in the district and competition for tenements is high
- **Geology:** Monument controls 32km of strike on highly-prospective greenstone sequences

Murchison Portfolio - Burnakura

Existing Plant & Infrastructure = Cash Generative Restart Option



Burnakura Gold Plant

Burnakura Development

- Option for plant expansion of up to 750ktpa production

Infrastructure

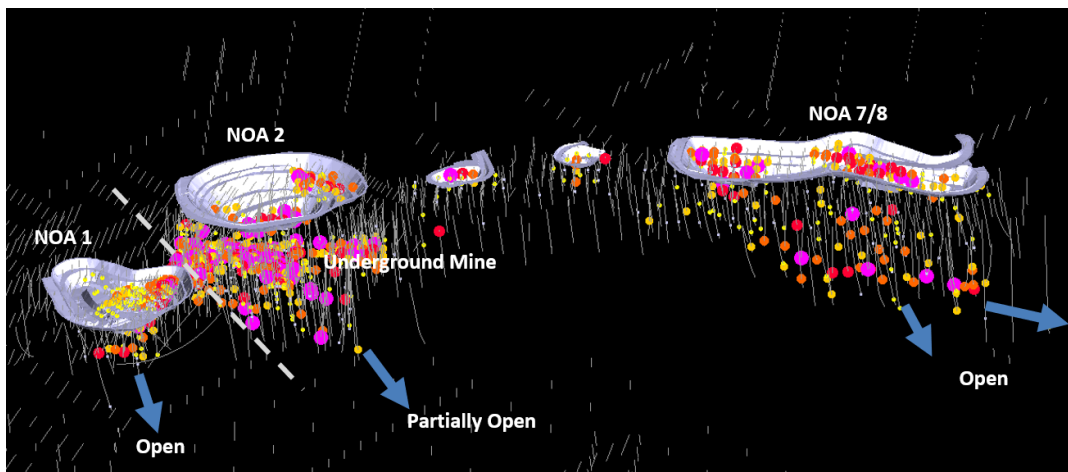
- Existing 260,000 tpa CIL processing plant well maintained with a fully commissioned operational camp ready for production

Existing Resources

- NI 43-101 Compliant Resources of 381 koz at Burnakura

Exploration Potential

- Exploration upside from over 20km of prospective strike length
- Almost 2km of prospective strike length with no drilling
- Targeting down-dip extensions of historic open pits
- Less than 5% of drilling deeper than 100m



Burnakura exploration opportunities beneath existing pits

Murchison Portfolio - Gabanintha



Gabanintha Development

- Planning to complete a full review of historical maps and reports for Gabanintha project
- Additional pit mapping and structural interpretation of the main Gabanintha pit area will be completed to assist in drill hole targeting underneath the existing pits

Historical Resource

- Historical Resource of 153 koz at Gabanintha

Exploration Potential

- 6 historical open pits with high grade intersections that are open at depth with potential to extend mineralization down dip, beneath existing pits
- A total of 30 regional exploration targets were identified at the Gabanintha project as part of the regional review
- Exploration program includes testing high priority regional targets for potential discovery of shallow stand alone or satellite gold deposits
- Less than 5% of drilling deeper than 100m

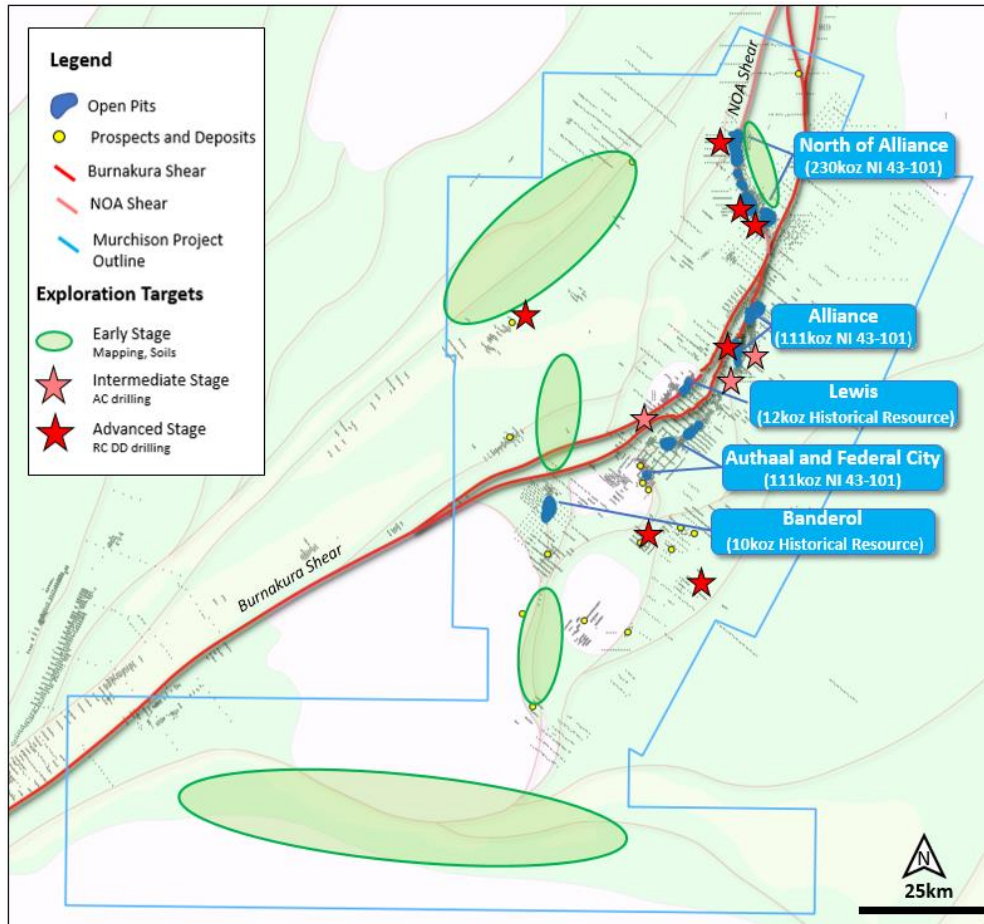
Murchison Resources

UPDATED MINERAL RESOURCES, BURNAKURA GOLD PROJECT (SRK, JULY 2018)					
Deposit	Category	Lower Cut-Off (Au g/t)	Tonnes (Kt)	Au (g/t)	Gold (Koz)
NOA1-6	Indicated	0.5	1,030	2.1	68
	Inferred	0.5	609	2.3	44
ANA	Indicated	0.5	2,141	1.6	107
	Inferred	0.5	92	1.5	4
Authaal	Indicated	0.5	-	-	-
	Inferred	0.5	556	1.4	25
Federal City	Indicated	0.5	96	1.3	4
	Inferred	0.5	259	1.3	11
Total*	Indicated	0.5	3,267	1.7	179
	Inferred	0.5	1,516	1.8	84
NOA7-8**	Indicated	3.0	776	4.6	114
	Inferred	3.0	35	3.9	4
Grand Total	Indicated	-	4,043	2.3	293
	Inferred	-	1,551	1.8	88

- (1) Small discrepancies may occur due to rounding.
- (2) All Mineral Resources have been reported on a dry tonnage basis.
- (3) SRK is unaware of any issues that materially affect the Mineral Resources in a detrimental sense.
- (4) Mineral Resources that are not Mineral Reserves do not have demonstrated economic viability.
- (5) Mineral Resources estimated by David Slater (Principal Consultant, SRK), QP.
- (6) *Open pit Resources (NOA1-6, ANA, Authaal, Federal City) are constrained in a Lerchs Grossman pit shell,
**Underground Resources (NOA7-8) are constrained to >3g/t and 200m vertical depth.

Murchison Portfolio

Developing A Potential Cornerstone Asset



Burnakura Exploration and Gold Resources



Development Strategy

Three Prospective Tenements:

- Burnakura 123.1km², 381 koz (NI 43-101), 260kpta CIL plant
- Gabanintha 43.4km², 153 koz (JORC Historic)
- Tuckanarra (20% MMY) 63.7km², 81 koz (JORC Historic)

Exploration



- AUD10m committed for two-year exploration program at Burnakura and Gabanintha
- Focus on new gold discovery, test upside resources potential to turn Murchison into a larger gold producing mine and become a cornerstone project
- Highly competitive M&A environment

Mine Restart Potential



- Existing plant offers potential for early cash flow

Collaboration



- Advanced exploration through 80% JV partner Odyssey Gold in Tuckanarra for A\$5m + 1% NSR; Monument free carried until a decision to mine

Murchison 2-year Exploration Program



Program aims to discover significant additional resources to establish Murchison as a cornerstone project for the Company

- COMPLETED-Phase 1 RC and AC drill program comprised 3,465m in 46 RC holes and 10,484m in 349 AC holes, designed to test new targets away from known resources; results confirm discovery of new high-grade mineralization at the Junction Target
- UNDERWAY-Phase 2 RC and DD drill program aims to test for extensions to known mineralization and resources at the NOA1, NOA2, NOA7/8 and Alliance target areas; total of 2,918m in 12 RC holes were completed to date, and 1,406 RC samples have been sent for assaying





Investor Relations Contact:

Richard Cushing
Monument Mining Ltd.
T: +1-604-638-1661 x102
rcushing@monumentmining.com